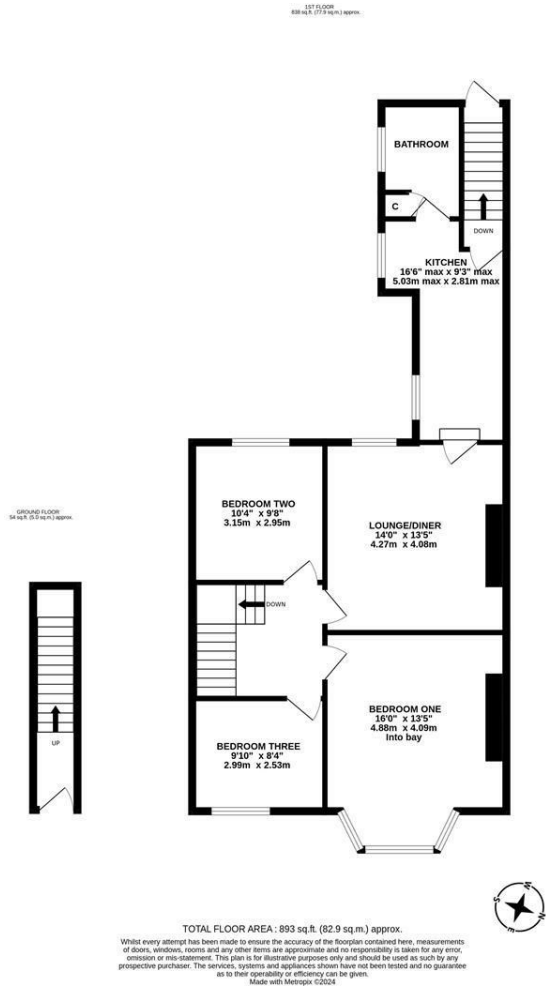




Upper Floor Flat with West Facing Rear Gardens!  
 This three bedroom, end-terrace upper floor 1930's Tyneside flat is ideally located close to Jesmond Dene on Northumberland Gardens within Jesmond Vale. Jesmond Vale, a perfect location for a variety of buyers within walking distance to the shops cafés and restaurants of Jesmond as well as Newcastle City Centre itself.

The accommodation briefly comprises: entrance hall with stairs to first floor landing; lounge diner; 16ft kitchen with dual windows, fitted units and work surfaces; bathroom complete with three piece suite and storage cupboard; three bedrooms, bedroom one measuring 16ft with walk in bay. Externally, a delightful west facing mature garden, laid to a mixture of lawn and gravel together with a decked seating area, paved pathway, planting, fenced boundaries and gated access to the rear. With gas 'combi' central heating and double glazing, early viewings are advised!

Upper Floor 'Tyneside' Flat | 893 Sq ft (82.9m2) |  
 Three Bedrooms | Lounge Diner | 16ft Kitchen  
 | Bathroom | West Facing Rear Garden | GCH  
 & DG | Popular Location | Leasehold - Tyneside  
 Lease with Peppercorn Rent - 963 Years  
 Remaining | Ground Rent & Service Charge £0  
 Per Annum | Council Tax Band B | EPC: C



**Offers Over £225,000**

**IMPORTANT NOTE:** These particulars and the descriptions and measurements herein do not constitute representation and whilst every effort has been made to ensure accuracy, this cannot be guaranteed.

